

# 383

## Frozen Uncarbonated Beverage (FUB) Freezer

Single Flavor

### Features

Serve non-dairy frozen beverages, like cocktails, smoothies or frozen lemonade, fruit juices, coffees, cappuccino and tea. Pre-mix may be dispensed directly into a cup or blend flavors for more variety.

#### Freezing Cylinder

One, 10 quart (9.5 liter).

#### Mix Hopper

One, 12 quart (11.4 liter). An adjustable setting in the refrigeration system maintains mix temperatures in the hopper.

#### Indicator Lights

Add Mix light alerts the operator to add mix. When the Mix Out light flashes, the unit shuts down automatically to prevent damage.

#### Automatic Consistency Control

Refrigeration is regulated by monitoring viscosity. Adjustable control allows the operator to serve a wide variety of frozen beverages from regular slush to cocktails, pre-mix or neutral base, all at the desired thickness.

#### Flavor Cards

Four static cling flavor cards are provided: Frozen Drinks, Frozen Cocktails, Frozen Fruit Drinks and Margaritas.

#### Continuous Auto Fill System (Optional)

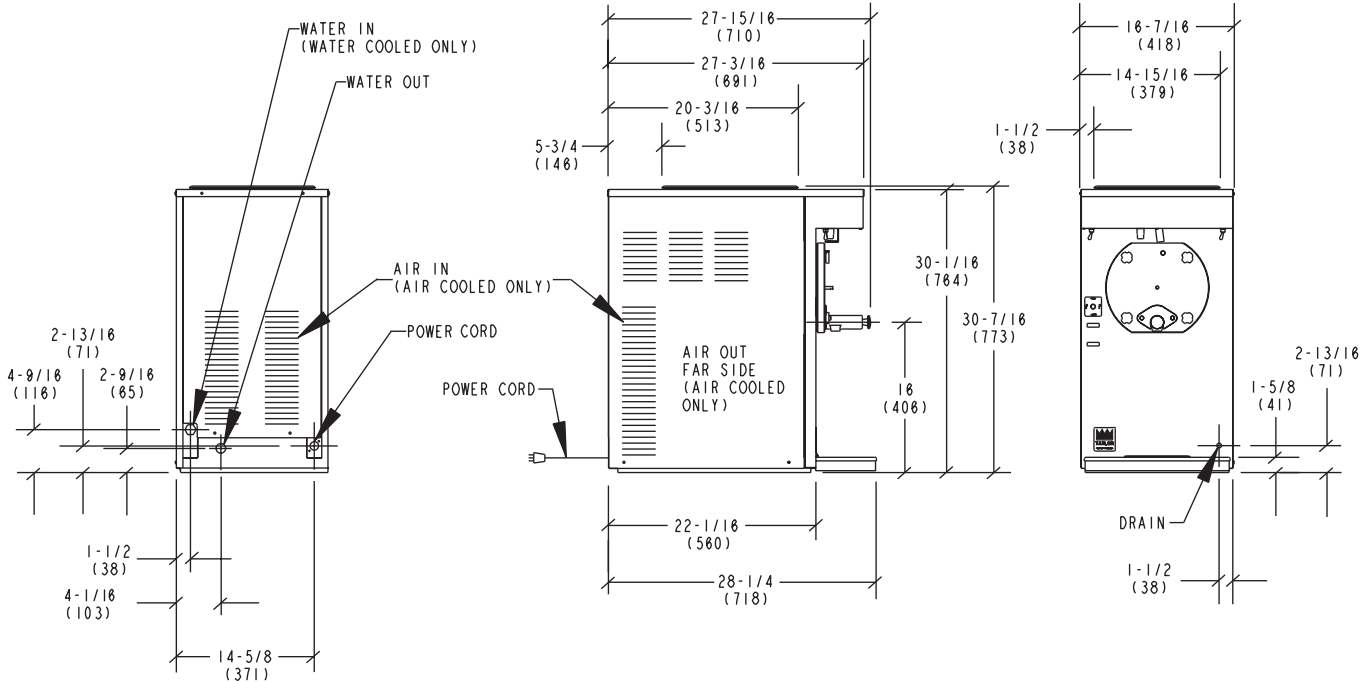
Mix supply to the hopper can be replenished automatically from a remote delivery system customized to suit your business by your local Taylor distributor.

#### Lighted Display (Optional)

Create even more attention with the optional lighted display.



# 383 Frozen Uncarbonated Beverage (FUB) Freezer



NOTE:  
DIMENSIONS IN PARENTHESES  
INDICATE MILLIMETERS

Weights	lbs.	kgs.
Net	212	96.2
Crated	243	110.2
	cu. ft.	cu. m.
Volume	14.5	0.40

Dimensions	in.	mm.
Width	16-7/16	418
Depth	28-1/4	718
Height	30-7/16	773
Counter Clearance	*	*

\*Designed to rest on a plastic pad directly on counter top.

Electrical	Total Amps	Supplied with NEMA Cord
115/60/1 Air	16.0	5-20P
115/60/1 Water	16.0	5-20P
208-230/60/1 Air	9.8	6-15P
208-230/60/1 Water	9.8	6-15P
220-240/50/1 Air	6.9	----

This unit may be manufactured in other electrical characteristics. Refer to the local Taylor Distributor for availability.  
(For exact electrical information, always refer to the data label of the unit.)

## Bidding Specs

Electrical: Volt \_\_\_\_\_ Hz \_\_\_\_\_ ph \_\_\_\_\_  
Neutral:  Yes  No | Cooling:  Air  Water  NA

Options: \_\_\_\_\_

## Specifications

### Electrical

One dedicated electrical connection is required. See the Electrical chart for the proper electrical requirements. Manufactured to be cord connected. Consult the international Taylor distributor for cord & receptacle specifications for 50 Hz. equipment.

### Beater Motor

One, 1/2 HP.

### Refrigeration System

One, 4,000 BTU/hr compressor. R404A. (BTUs may vary depending on compressor used.)

### Air Cooled

Minimum Clearance: 6" (152 mm) around all sides. For multiple unit installations, a barrier must be installed 6" from each freezer to assure adequate air flow and reliable performance.

### Water Cooled

Water inlet and drain connections at the rear of unit 3/8" FPT.

## Options

- Customized Mix Delivery System with Continuous Fill
- Lighted Front Display

Continuing research results in steady improvements; therefore, these specifications are subject to change without notice.



**Taylor Company,**  
A Division of Carrier Commercial Refrigeration, Inc.  
Rockton, Illinois 61072  
815-624-8333 800-255-0626 Fax 815-624-8000  
www.taylor-company.com

Printed in U.S.A.

052004-ADV 11/05