

8752P

Soft Serve Freezer

Single Flavor, Horizon® Mix Delivery System

Features

Offer all the popular soft serve variations from low or non-fat ice creams to custards, yogurt and sorbet. The Horizon® Mix Delivery System offers high capacity in a pressurized system with consistent overrun and simplified operation.

Freezing Cylinder

One, 3.4 quart (3.2 liter).

Refrigerated Mix Storage Cabinet

Lower front mix cabinet is independently refrigerated to maintain mix below 41°F (5°C). Door is hinged on the right. One, 15 gallon (57.0 liter) mix tank. The Horizon® Mix Delivery System delivers the precise amount of air and mix to the freezing cylinder.

Indicator Lights

Mix Low light alerts the operator to add mix. When the Mix Out light flashes, the unit shuts down automatically to prevent damage.

Electronic Controls

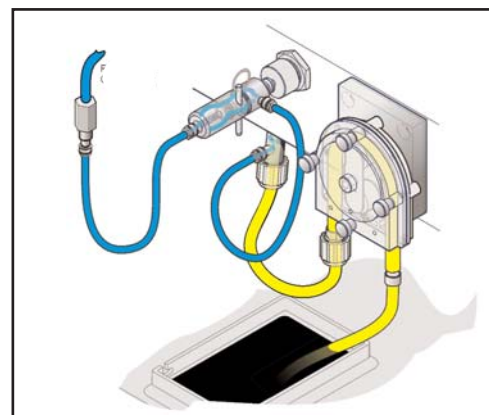
Finished product quality is monitored by Softech™ controls that measure viscosity.

Standby

During long no-use periods, the Standby feature maintains safe product temperatures in the freezing cylinder.

Horizon Mix Delivery System

Easy to clean and offers reliable overrun control. Simple overrun adjustment from 25 to 70% (depending on mix formulation). Ability to dispense higher butterfat or fruit products with pulp.



Standard 6

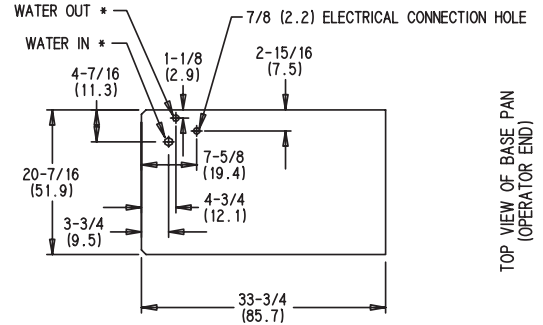
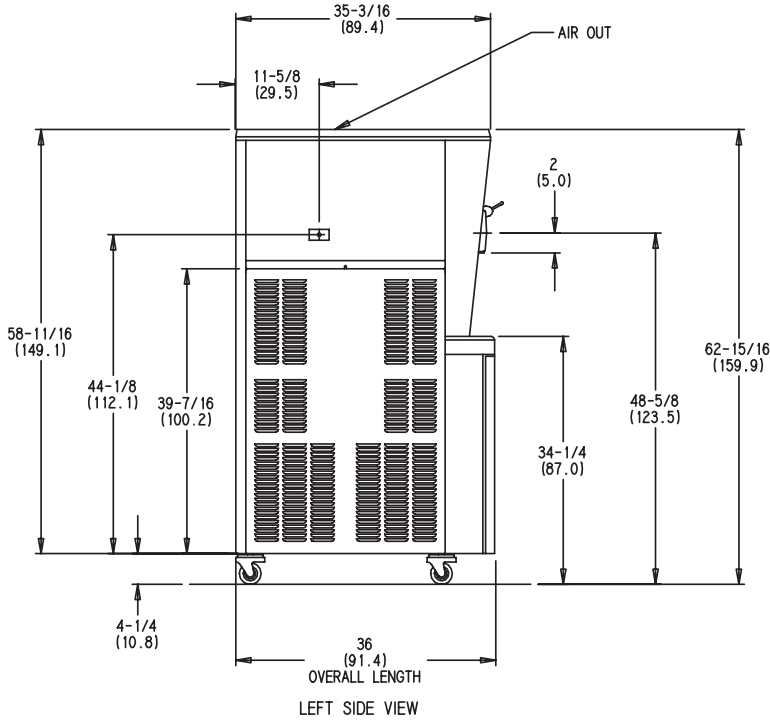


SA2650



Selected 50 Hz. Models

8752P Soft Serve Freezer



Weights	lbs.	kgs.
Net	659	298.9
Crated	782	354.7
	cu. ft.	cu. m.
Volume	68.0	1.62

Dimensions	in.	mm.
Width	20-5/8	524
Depth	36	914
Height	62-15/16	1599
Floor Clearance	4-1/4	108

*Mounted on standard casters

Electrical	Maximum Fuse Size	Minimum Circuit Ampacity
208-230/60/1 Air	40	30
208-230/60/1 Water	40	29
208-230/60/3 Air	30	23
208-230/60/3 Water	30	23
380-415/50/3N~ Air	15	14

This unit may be manufactured in other electrical characteristics. Re local Taylor Distributor for availability. (For exact electrical information, always refer to the data label of the

Bidding Specs

Electrical: Volt _____ Hz _____ ph _____
 Neutral: Yes No **Cooling:** Air Water NA

Options: _____

Specifications

Electrical

One dedicated electrical connection is required. See the Electrical chart for the proper electrical requirements. Manufactured to be permanently connected. Consult your local Taylor distributor for cord & receptacle specifications as local codes allow.

Beater Motor

One, 1.5 HP.

Refrigeration System

One, 9,500 BTU/hr. R404A.
 Mix Cabinet Refrigeration, One, 1,100 BTU/hr. R404A.
 (BTUs may vary depending on compressor used.)

Air Cooled

Minimum 3" (76 mm) around all sides and 12" (305 mm) on top. Minimum air clearances must be met to assure adequate air flow for optimum performance.

Water Cooled

Water inlet and drain connections under side of base 3/8" FPT.

Options

- Cone Dispenser
- Draw Valve Lock Kit
- Panel Spinner
- Sneeze Guard
- Syrup Rail Kit (side mount)

Continuing research results in steady improvements; therefore, these specifications are subject to change without notice.



Taylor Company,
 A Division of Carrier Commercial Refrigeration, Inc.
 Rockton, Illinois 61072
 815-624-8333 **800-255-0626** Fax 815-624-8000
www.taylor-company.com

Printed in U.S.A.